

NEWSLETTER

ILLINOIS SOIL CLASSIFIERS ASSOCIATION
FEBRUARY 1976

Several events have taken place within our young organization since the last newsletter. Your newsletter committee wants to bring everyone up to date on what has happened and also to enlist your help in some current issues.

ELECTION

The election board certified at the annual meeting on January 15th that Ray Herman was elected to the office of President-Elect and Burt Ray was voted into the office of Vice President for the coming year of 1976. Also during the annual meeting, President Mapes passed the gavel on to the incoming President, J. Wiley Scott. Rex appreciates the help and cooperation that he received during the past year and wants to thank all those who contributed.

PRESIDENT'S MESSAGE

Had any good ideas lately? Who did you tell it to? What action was taken? Our association is an idea put into motion. It was only a year ago that we assembled to discuss an idea. We selected leaders for a steering committee. By June we organized and elected officers. We were in motion! Considerable work went into the process of organizing and a lot remains to be done. We need to all work together to get our goal accomplished. We need your ideas and some of your time. I want to encourage each member to take an active part in the association. You can do that by sharing your ideas with us. You can do it by serving on a committee or by contacting potential members. Soon we will ask you to contact your legislators to acquaint them with us and our objectives.

Speaking of objectives, do you know what ours are? That's a good place to start. I urge you to read again, our objectives in the Constitution. Check the preamble also and see what we are dedicated to accomplish. Then ask yourself what can I do to help. It's your association. Tell your officers and committee chairman what you want. Make suggestions! You can help to keep us in motion. I am looking forward to a good year for all of us.

J. Wiley Scott, President

HIGHLIGHTS OF STATE REP. HELEN SATTERTHWAITE'S
TALK AT THE ANNUAL BANQUET

Aware of our organization's goal to implement professional registration of soil classifiers, Representative Satterthwaite spoke on the challenge ahead.

Mrs. Satterthwaite dealt with the chronological steps and procedures that any proposed legislation must go through before it can be voted on by the Assembly and eventually passed as a bill. She stressed contacting legislators in each

district and informing them how our bill will be a help and a safeguard for the general public. Commitments from legislators prior to the bill's introduction in the Assembly is essential for legislative passage.

Representative Satterthwaite stated that the 1977 legislative session would be the earliest that we could expect introduction. A current backlog of bills exists in the current session. She also informed us of a fiscal obligation to the Department of Registration and Education once the legislation is enacted and the association is in the business of registration.

Those of us who heard Representative Satterthwaite thought she presented a clear and concise picture of the road ahead. We must get good information to our legislators throughout the state.

R. T. ODELL ON TDY TO HAITI

Association member Dr. R. T. Odell is on a four month assignment with the J. G. White Engineering Corporation to the Island of Haiti. Their mission is to develop plans to rehabilitate three very old irrigation systems and to implement these plans.

ASSOCIATION SYMBOL (LOGOS)

The committee on symbol and letterhead design headed by Walt Parks is proposing several designs and they want concurrence by the membership. Walt has had able assistance from Lon Young, Benny Weiss, and Don Phillips but they want you to help make this decision. Evaluate the seven examples shown on the attached two pages. Then indicate (by capital letter) your preference on the bottom of the annual dues remittance form in the space provided. The most popular design will be selected. It is expected that this symbol will be used very soon on such items as stationery letterheads, corporate seal, membership cards, and certificates.

REMINDER

Next council and committee chairman meeting is to be at the Round Barn Center at 10:30 a.m., Saturday, February 21, 1976.

FINANCES

Secretary-Treasurer J. D. Alexander reports that our income for 1975 was \$490.00. During the year \$227.06 was dispersed for expenses which largely consisted of postage, stationery, and incorporation expenses. This leaves the association with a balance of \$262.94 as of January 1, 1976. Expenses to acquire tax-free status with the Internal Revenue Service are expected to be incurred in 1976.

It's that time again when annual dues should be paid. To assist the Treasurer, the form below should be included with your remittance by March 1st.

ANNUAL DUES: Please fill out the form below, enclose check or money order for \$10.00, and return to JOHN D. ALEXANDER, Secretary-Treasurer, Illinois Soil Classifiers Association, 2607 Melrose Drive, Champaign, Illinois 61820 by March 1, 1976.

Name (full) _____

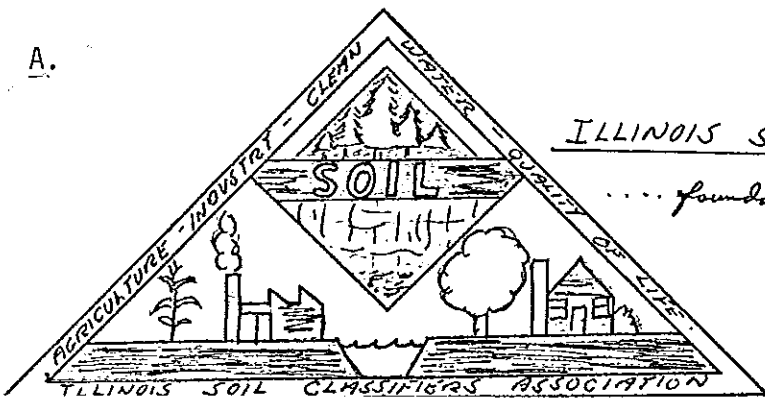
Home Address _____

_____ Telephone _____

Office Address _____ Telephone _____

I favor symbol design _____.

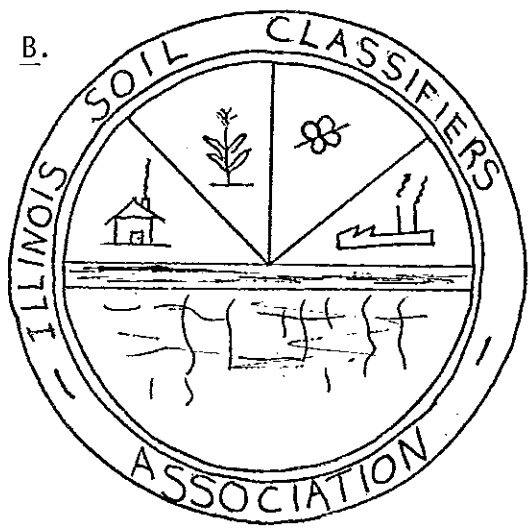
A.



ILLINOIS SOIL CLASSIFIERS ASSOCIATION

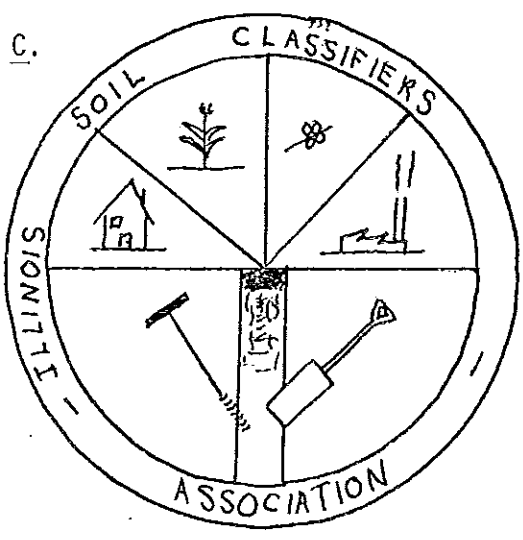
..... foundation for wise land use

B.



ILLINOIS SOIL CLASSIFIERS ASSOCIATION

C.



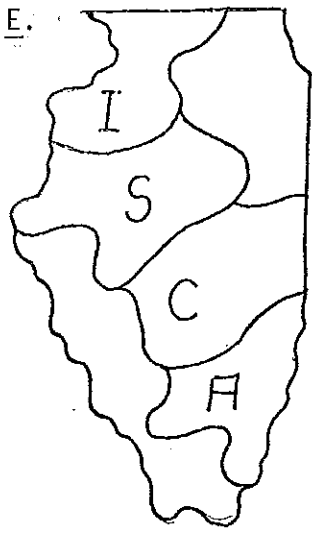
ILLINOIS SOIL CLASSIFIERS ASSOCIATION

D.

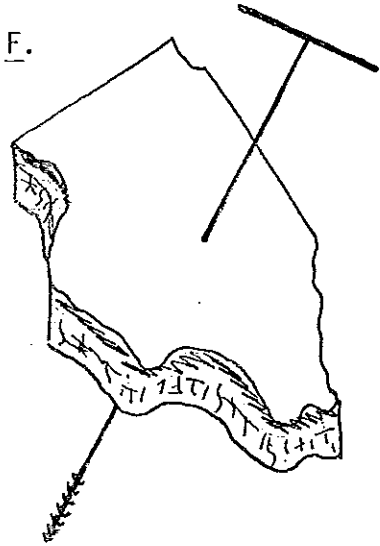


Illinois Soil Classifiers Association

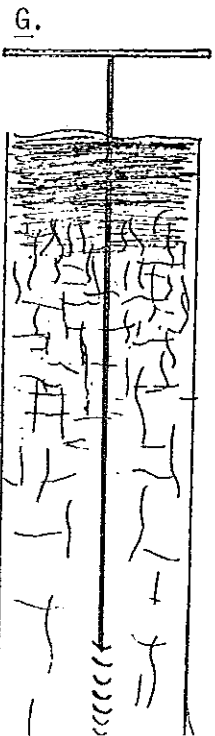
~~REFERENCE~~



Illinois Soil Classifiers Association



ILLINOIS SOIL CLASSIFIERS ASSOCIATION



ILLINOIS SOIL CLASSIFIERS ASSOCIATION

7/16

NEWSLETTER

ILLINOIS SOIL CLASSIFIERS ASSOCIATION
JUNE 1976

SUMMER MEETING

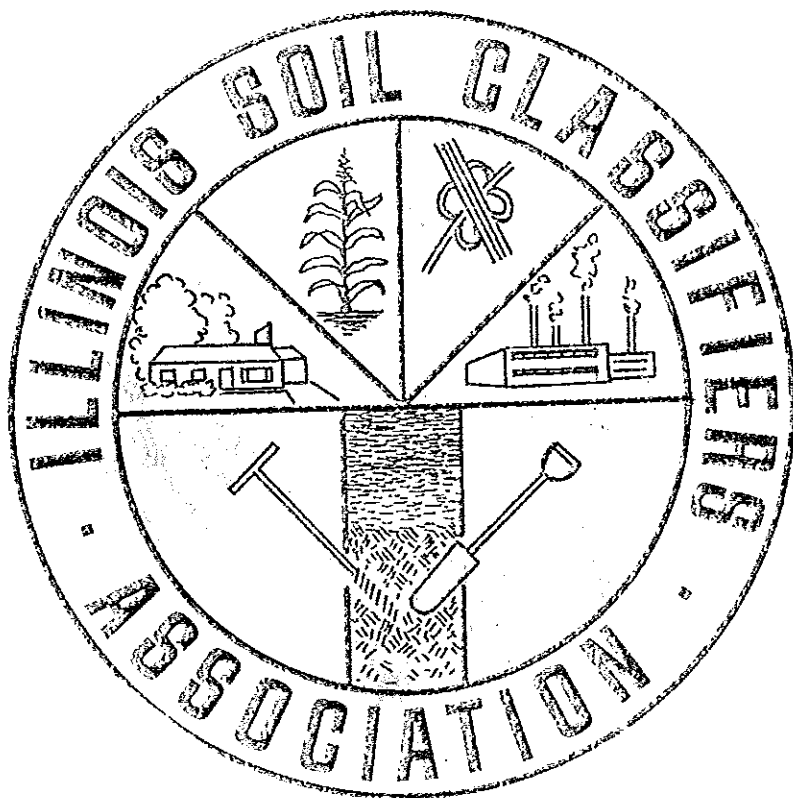
Let's get together at Bloomington. According to the program committee, arrangements have been made to meet at Miller Park in Bloomington on Saturday, July 24. This is a family affair, scheduled to start at 12:00 noon, with a self-provided picnic lunch for yourself and family.

A business meeting is next on the agenda. During this time your family may want to go to the swimming beach at this park (with lifeguard) or go to the nearby zoo.

After the business meeting has adjourned, there should be plenty of time to play softball, yard games, or just plain socialize. (SEE LOCATION MAP ON THE BACK PAGE.)

DRAFT REGISTRATION BILL

Sometime in May each member of the association received a draft copy of the registration law and code of ethics. Plans are to review this document at the July meeting. In the meantime, you may want to make your comments and suggestions directly to J. B. Fehrenbacher or present them on July 24th.



I.S.C.A. SYMBOL

Your response to the job of selecting an organization symbol or logus was commendable. After all the votes were counted, the circular symbol illustrated here received a convincing majority of the votes.

Hopefully in the near future, our letterheads, newsletters, and I.D. cards will carry this symbol.

We want to give Jerald Alexander, soil scientist at Morris, our best wishes for a safe trip and an interesting 3-months assignment in Alaska. Jerry is leaving in early July for the Anchorage area. Maybe he will be a candidate for a program when he returns.

THAT'S ORGANIZATION

The following story illustrates how important a strong organization can be for our purpose:

A farmer and his city friend were riding along in a spring wagon. A big horsefly lit on the ear of the horse on the right. The farmer cracked his long bull whip and very deftly flicked off the fly without as much as touching the horse's ear. The city man was amazed at such skill.

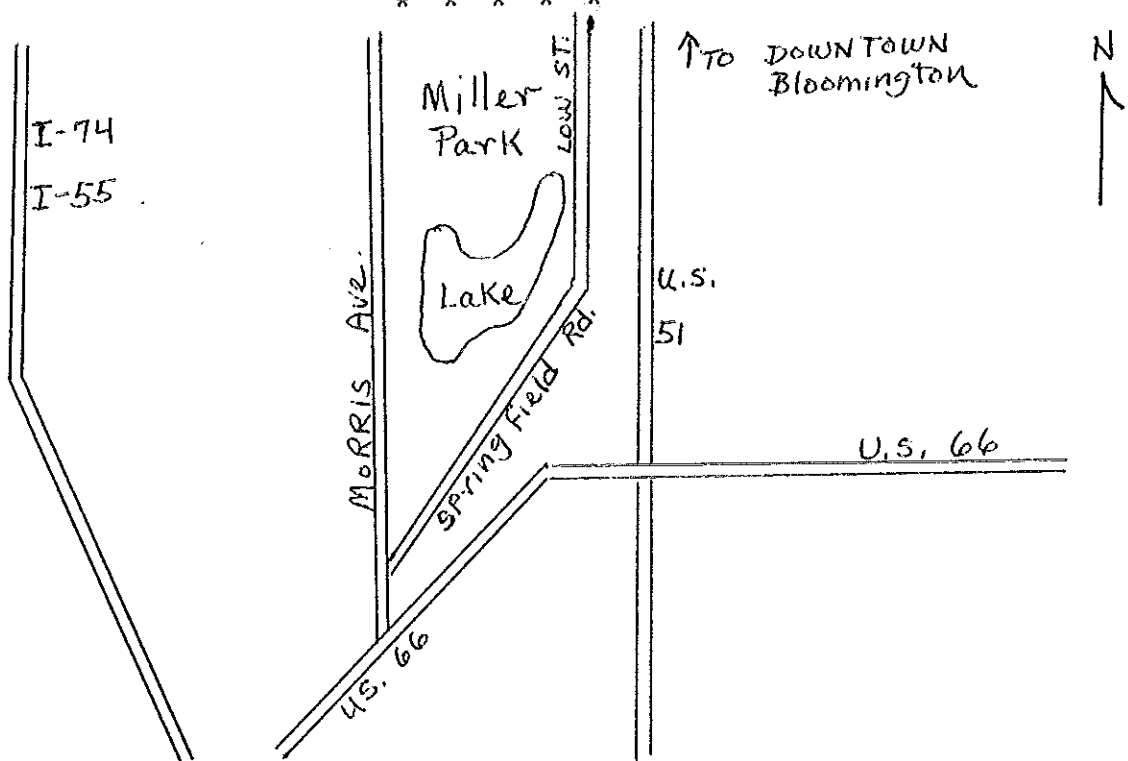
As they rode on they passed a bullfrog in the act of catching a butterfly. Again the farmer let go a deadly accurate snap of the whip and drove the lower jaw of the bullfrog into the ground, releasing the butterfly. The city man was so astonished he could hardly believe his eyes. He inquired how such skill was obtained.

"Oh," said the farmer, "it comes with lots of practice. Anyone could do that if he worked at it."

Well, they rode on down the road until they came to a bee-hive with one lone bee sitting on top sunning himself. He was a perfect target, but the farmer didn't move.

"Well," said the city man, "there is your opportunity. Why don't you pick that bee off the hive?"

"Oh, no!" said the farmer, "Not one of them! They've got an organization!"



NEWSLETTER

ILLINOIS SOIL CLASSIFIERS ASSOCIATION November 1976

The last Newsletter was issued in June, 1976 and in this issue we hope to inform you of some of the activities of our Association and of individual members during the past few months. Members of the Newsletter Committee solicit materials at any time from the membership to be included in future issues. Send your items to Chris Cochran, Mark LeVan, George Walker, or Burt Ray.

ASSOCIATION SUMMER MEETING IN JULY

Ten members, many with their wives and families, assembled in Miller Park, Bloomington for a family style picnic on Saturday, July 24. Following dinner a business meeting was held consisting mainly of committee reports and discussions of future plans. Copies of the printed promotional brochure on the general theme of "The Soil Classifier and What He Does" were available which had been developed by our Public Relations and Education Committee. Plans were proposed for obtaining costs of printing letterhead paper and envelopes with our official symbol and for preparing promotional packets for potential new members. The Ethics, Registration, and Membership Committee were instructed to make contact with potential sponsors of our registration bill by October 1, 1976. It was decided that contacts with legislators and other individuals and groups to obtain support for our bill would be vigorously pursued following the November general elections.

OCTOBER COUNCIL MEETING

The Executive Council and most committee chairmen met in Champaign, Illinois on Saturday, October 23. Committee reports were presented and future plans for the Association outlined. The Ethics, Registration, and Membership Committee have contacted Representative Satterthwaite and Senator Weaver concerning our registration bill. Senator Weaver submitted our bill for final drafting to the Reference Bureau and it is expected back soon. Both legislators suggested that our bill be introduced early in the next legislative session. The date for the annual meeting of I.S.C.A. has been tentatively set for late February, 1977. You will be receiving information as the result of other Committee action in the near future.

MEMBERS SERVE IN FAR AWAY PLACES

Jerry Alexander has returned from a "Summer of Sun" having been detailed to the Anchorage, Alaska area from July 6 through September 18. He was a member of a 3 man survey team working mainly in urban and urban fringe areas with maps of a scale of 1:12,000. Many soil areas are not well suited for construction sites and lots with access to electricity may cost as much as \$55,000 minus the dwelling! Jerry relates this was a most enjoyable and interesting assignment. He had the opportunity to study many Histosols and Spodosols, went hunting for permafrost in the area of Mt. McKinley, and brought back many interesting pictures.

Kermit and Helen Larson are "at home" in Peshawar, Pakistan having arrived in August for a two year stay. In Helen's words they found the area "greener, cleaner, wilder, cooler, and more dangerous on the roads than expected." Peshawar is in the valley of the Kabul River and located in the Northwest Frontier Province. The area was green on arrival because of the August monsoon rains. Most of the valley is irrigated by canal water that originates in the Himalayan mountain range to the north. Main crops are tobacco, wheat, sugarcane, sugar beets, corn, and sorghum. Two crops per year can be grown on irrigated land. Kermit has been kept busy since their arrival but apparently is finding some time for wild pig hunting now after expending much energy in tracking down the lost air freight shipment. He has promised to send more specific details about his assignment in future communiques.

Russ Odell is on the move again having left for the country of Zaire on November 1 in the company of a crop specialist and agricultural engineer from the University of Illinois. They will spend approximately one month in Zaire preparing a project plan for increasing the production of food legumes, especially soybeans. They will be working with the Institute National pour L'Etude et la Recherche Agronomiques (INERA). The team will prepare plans to select suitable soil areas, guide soil fertility investigations and recommendation services, and develop on-farm "production packages" for producing soybeans and other food legumes. If the project is approved, specialists from the United States will later help the INERA implement the program to increase the production of soybeans and other high-protein crops and thereby improve human nutrition in Zaire.

PRESIDENT'S MESSAGE

At the October meeting of the Executive Council and committee chairmen, I was encouraged by the progress reported. Our committee chairmen have been working hard. I am certain that many of you have made contributions to the work that has been done. Soon you all will be asked to take a more active part in the work of the Association. We have a big job ahead to gain support for the registration bill. I urge all of you to make time available in your busy schedule to do the jobs that are asked of you.

We are planning a campaign for each member who is a resident of Illinois to make specific personal contacts with legislators. We also have listed other organizations and agencies that we will contact to inform them of our objectives and ask for their support. You will receive your assignments and a suggested "sales pitch" in a later mailing.

Elsewhere in this Newsletter are requests for your ideas. We need to know what kind of program you want for the annual meeting. We also need to know of examples to support the need to register soil classifiers. Please respond to these requests. I look forward to seeing all of you at the winter annual meeting.

Wiley Scott, President

YOUR HELP IS NEEDED

Members of the Association will be contacting many legislators in the near future to seek support for our registration bill. Before we make these contacts we need to have a convincing statement as to why we need and want to become registered. Therefore, I am requesting that all members cite definitive examples of how the I.S.C.A. can protect the public welfare. Please respond by December 4, 1976 to me, Henry Mount, Chairman of the Public Relations and Education Committee, 814 West Maple Street, Champaign, Illinois, 61820.

In order to further the goals and objectives of our Association, your program ideas are needed for the Annual Meeting. Please complete the following information and send by return mail to STEVEN E. ZWICKER, Box 12, R.R. #1, Harmon, Illinois, 61042. Suggestions must be received by December 1, 1976, to receive consideration by the committee.

SUBJECT MATTER DESIRED: _____

RESOURCE PEOPLE (SPEAKERS, ETC.): _____

OTHER: _____

I.S.C.A. PROGRAM COMMITTEE

Earl E. Voss

Donald J. Fehrenbacher

Leon P. Follmer

Steven E. Zwicker